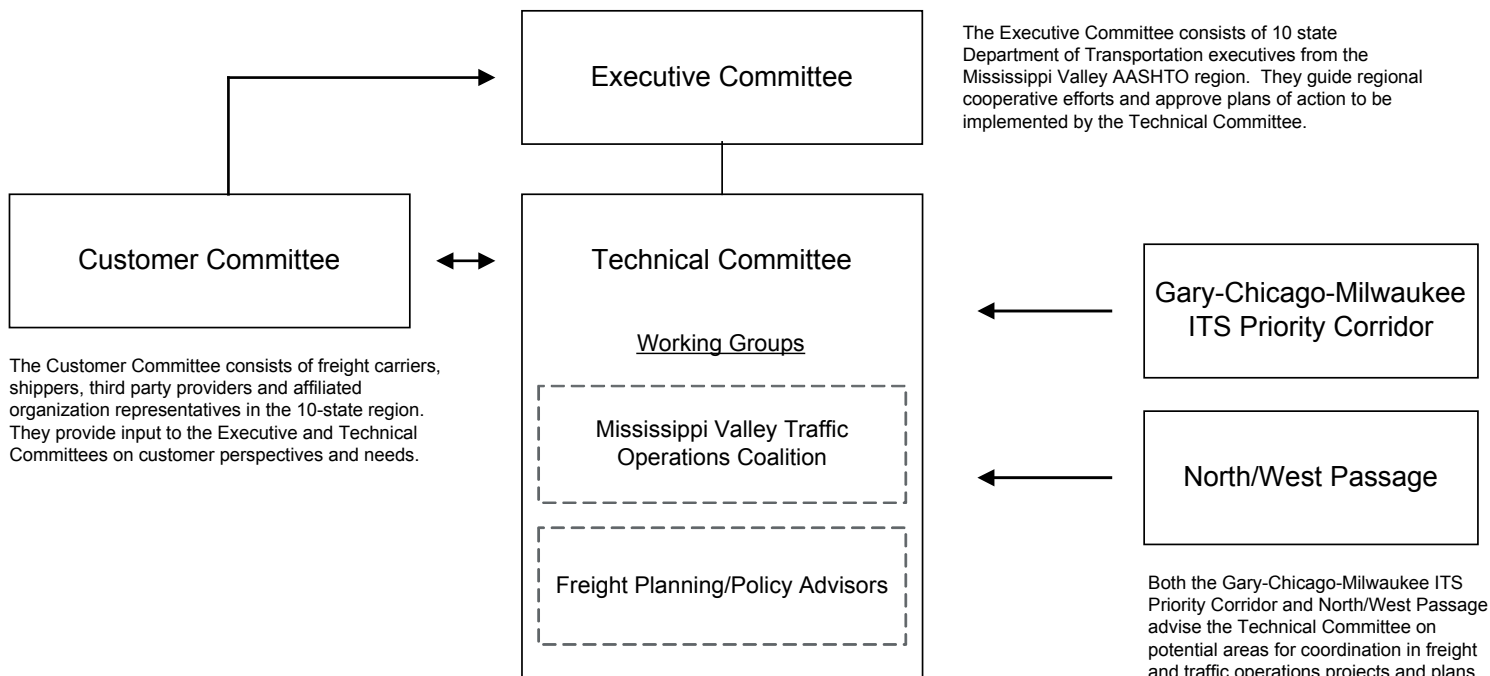


Mississippi Valley Freight Corridors Coalition

Administered by the University of Wisconsin-Madison



Organizational Structure



Executive Committee

The Executive Committee consists of 10 state Department of Transportation executives from the Mississippi Valley AASHTO region. They guide regional cooperative efforts and approve plans of action to be implemented by the Technical Committee.

Customer Committee

The Customer Committee consists of freight carriers, shippers, third party providers and affiliated organization representatives in the 10-state region. They provide input to the Executive and Technical Committees on customer perspectives and needs.

Technical Committee

Working Groups

Mississippi Valley Traffic Operations Coalition

Freight Planning/Policy Advisors

Gary-Chicago-Milwaukee ITS Priority Corridor

North/West Passage

Both the Gary-Chicago-Milwaukee ITS Priority Corridor and North/West Passage advise the Technical Committee on potential areas for coordination in freight and traffic operations projects and plans.

The Technical Committee consists of appointed state Department of Transportation staff (with voting rights) from the 10-state region, specializing in either freight policy/planning or traffic operations. In addition, the Technical Committee includes the open working groups of the Mississippi Valley Traffic Operations Coalition and Freight Planning/Policy Advisors. The Technical Committee proposes, recommends for approval by the Executive Committee, and implements plans of action for improving the regional transportation systems.